

SERVANTS' SONG

A PUBLICATION OF CHRIST THE SERVANT LUTHERAN CHURCH

May 2009

Semi-Annual Meeting

Christ the Servant Lutheran Church's Semi-Annual meeting is set for Sunday, May 17, 2009 at 11:00 am.



There will be a single worship service that day at 9:30 am. No Education Hour will be held.

Topics to include the nomination and/or approval of new council members.

LUNCH-TIMERS WELCOME SHELLY SWENSON

Enjoying the "Getting to Know You" (better!) theme for our programs, this month on May 13 at noon, the Lunch-timers will welcome Shelly Swenson. She will reveal "What Makes Me Smile", which is her topic. We recognize Shelly's musical talents as choir member, soloist, cantor and quartet member...but we imagine what we know just scratches the surface of a wonderful musical life. We are eager to find out more! How has she developed her talents in such a wonderful way?

And, as a nurse: well, there we go again -- we'd like to know more about her professional career! We know Shelly, too as Leith's wife and mother of four. No wonder she smiles!!!

This opportunity to get much better acquainted with yet another member of our church family is exciting and so satisfying. Won't you join us on Wednesday, May 13 just before noon with your potluck contribution and then after lunch help us welcome Shelly Swenson as she shares "What Makes Me Smile". It's the kind of church family event you won't want to miss; everyone is welcome who can claim a little lunch time!



Working and Waiting

By Deaconess Boyden

I confess sometimes I have worried during this interim time that our congregation would get lackadaisical during this interim time. I've heard of it happening before. Members of congregations slacking off on worship attendance until the excitement of a new pastor's arrival. Studiers of the word taking a hiatus waiting for new leadership. Necessary tasks going undone while energy lags.

But have you seen Christ the Servant in action during Lent? There were lay preachers every week! including storytellers prophesying and encouraging at the Easter Vigil. Not to mention the many who knelt to wash feet on Maundy Thursday. And the singers-- the littlest ones proclaiming "Easter Power" and every age on up singing their hearts out! And the oh so many behind the scenes laborers for the worship services and fellowship events. How did the stones of that fountain keep getting moved? Who hung all those flowers? Who moved all those chairs and set all those tables? How many bakers, soup stirrers, and dish washers?

Thank you to all the faithful who have served our Lord and this community in these holy days. God grant you strength to continue to witness to the power of the risen Christ in your humble and bold actions. And may God prepare one to come among us as a servant leader and leader of servants.



Christ the Servant Lutheran Church — Mission Statement

*Called by God to share the Good News, we are the hands of Christ:
lifted in worship, joined in learning, extended in service, supporting in love and reaching for justice.*

CALL COMMITTEE UPDATE

We are all called to ministry and the Call Committee would like to publicly thank those who have ministered with us during our recent interviews with candidates for our next senior pastor.

- ✦ Bob and Diann Christey loaned us their lake house for the candidates to stay in during their visit to Bellingham.
- ✦ Joni Hall prepared welcome baskets for our candidates to give them a taste of our community through local treats, traditions and reading material.
- ✦ Jan Rystrom, Ellen Harris and Kathy Wines provided breakfast for our guests before their day of touring the city and meeting with the Call Committee.
- ✦ Diane Miltenberger, Laura Norton, Ilene Green and Lisa Cornwell all cleaned, made beds and straightened up the accommodations between candidates.
- ✦ Jan Rystrom, Michele Gordon, Lynda Clemons and Cindy Klein prepared dinner for the committee and the candidates the evening of their interview.
- ✦ Claudia Ackerman and Andy Harris handled correspondence for the committee.
- ✦ Laurie Robinson helped with drop offs and pick ups to keep things flowing smoothly.
- ✦ Diane Bochsler, Wilma Lysen and Kathy Dooley did extra cleaning and made their homes available to the committee to use for interviewing candidates.
- ✦ Brad Cornwell has given us valuable insight from his perspective as congregational president.

Several others in the congregation have offered their homes or volunteered to help. We weren't able to use all of you in the first part of the process but there will be other opportunities in the weeks ahead. We appreciate your enthusiasm and we will call on you as the call process moves forward.

Thank you all for your time and effort as we work together to call our next pastor. You are very much appreciated by us.

The Call Committee- Sidney Evans, Connie Clement, Karolyn Labes, Carolyn Casey, Rick Lysen, Bob Stewart, Dianne Bochsler, Matt Springer, and Shawn Dooley.

Interim Prayer Resumes

As our call committee continues to receive guidance from the Synod Office and to speak with pastors who might serve with CTS, the rest of us continue in prayer for the Holy Spirit to speak clearly. God is preparing both gift and work for us to do when a new pastor will come in leadership among us. Let us be about the work of prayer so that we are ready to receive both blessing and task.



On Wednesdays at 11:30am and 7:00pm Deaconess Boyden goes to the sanctuary (or alternate location

Continued next column

when necessary) for half an hour of prayer. Each week a different prayer method is employed. Sometimes she prays in solitude. Sometimes two or three or several more gather together. You are invited to join when you are in the neighborhood.

Pentecost Planning – We are looking for people who are willing to join with others to imagine how to adorn our sanctuary for the festival of Pentecost. Share your visions and ideas of how to depict the Holy Spirit moving among us....flowing fabric, ribbons of light, something lighter than air????? Interested? Contact Bonnie Drewes at 734-9696 or bondrewes@yahoo.com.

From the Desk of.....John

The Youth and Family Symposium held on April 18th at Lutherwood was an event I put together to bring ELCA churches from the Skagit / Island and Whatcom county clusters together to discuss youth and family ministry. We used asset mapping as a tool to begin this process. Asset mapping is a creative way of brainstorming what resources are available which then leads to a natural formation of actions, events, programs, or ministries. After the initial asset mapping we then had a discussion with a panel made up of a representative from each cluster, Nichol Ellis program director and executive director from Lutherwood, Bob Merrill as a Thrivent chapter representative, Rev. Dave Ellingson of Trinity Lutheran College, Rev. Chris Berry the WWU Lutheran Campus pastor, and Rev. Jan Nesse assistant to the bishop of NWWA synod. In addition to the panel there were approximately 18 participants from seven churches. As a result of this event several ideas and questions surfaced that will hopefully be formed into recommendations that could be adopted at a cluster level. At this time we do not have any formalized resolutions nor are we a formal organization. The spirit of the event produced on many levels a desire to pursuit an informal partnership in hopes of furthering the conversation.

The deans of the clusters Pastors Tim Whiteman and Larry Olsen have shown great support for this event. As we take steps towards the formalization of this group we will be looking to them for support and guidance. The make up of the group consisted of volunteers, church staff, pastors, and most importantly two youth. More youth involvement for the future is and will be a priority. CTS showed support through Shawn Dooley, John Grebe, and Pastor Jim. I want to thank them and others who have shown support for this project.

The asset mapping produced seven solid ideas for events that could easily be joint ventures. We voted on the events based on our greatest interest and these three had the most votes: Family Farm day, an event that we have shared with Zion Lutheran over the past two years, a summer biking trip to Lopez Island, and a service project in the fall. We will be making an effort to make these events part of our ministry here at CTS. As this dialog between the churches and clusters continues, we will keep you informed.

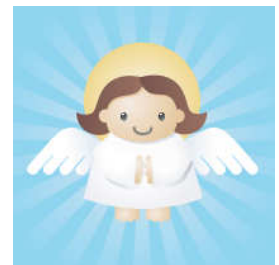
Youth and Family Ministry

Children's Ministry / Vacation Bible School August 3-7

Meagan Dooley, Kathy Dooley, Terri Cove, Joni Hall, and John Grebe are developing VBS for the week of August 3-7 and we are looking for volunteers. Meagan will be directing VBS as part of her Culminating Project, a WA State graduation requirement. If you are interested in being involved we are taking names and requests for volunteer opportunities. Please contact Meagan Dooley at meag_atron@hotmail.com or by phone 360-650-0926.

Sunday School

May 3	Regular Class
May 10	Regular Class
May 17	NO CLASSES**Semi-Annual Meeting
May 24	NO CLASSES**Memorial Day Weekend
May 31	Regular Class
June 7	Group Activity & Celebration/Teacher Appreciation / Confirmation Regular Class. Barbecue at Whatcom Falls?



We are the hands of Christ... **Joined in Learning**

Graduation Recognition

May 31 is the best date according to our church calendar for recognizing our graduating seniors. We need a complete list of their full names and a biography that can be displayed that day. Please contact John Grebe with this information. We will be honoring them between services and after the 11am service with refreshments and an opportunity for conversation.

Please let John or Laurie in the office know of any additional graduation events or special announcements of accomplishments of our sons and daughters of CTS.

Confirmation

The Confirmation Spring session is on Thursday nights from 6:15-7:45 pm. There are 6 sessions April 23, 30, May 7, 14, 21, and 28.

Middle School / Confirmation

May 29-30? "A day to remember", have you ever tried to pack a day full of the extreme? Well check this out we will be doing a fun filled event that the confirmation students will be creating for youth in 6-9th grades. Keep a look out for more details.

High School Youth Group

May 6 7-8:30pm H.S. Youth Discussion: Charity vs. Social Justice

May 13 7-8:30pm H.S. Youth Adopt a grandparent a visit to a retirement home or assisted living facility for activities and conversations.

May 20 7-8:30pm H.S. Youth Roller Skating in Lynden

May 24-25 H.S. Youth Overnight Compline trip to Seattle. We will be leaving CTS Sunday afternoon and travelling to Seattle for an evening of fun and worship. We will be staying the night in a church in the Seattle area then on Monday morning and early afternoon we will be exploring the city then return to Bellingham early evening. The cost of the event should be under \$50 and will be mostly for food and transportation.

May 27 H.S. Youth Choral Concert BHS

2009 National Youth Gathering

May 2 Please join us on May 2nd, 2009 for a night of Jesus, Justice, and Jazz! Help send twelve of your servants to the ELCA youth gathering in New Orleans! Come enjoy good food, good music, and an auction. Bring your friends and family. Time: 6:00 p.m. (Dinner) and 7:00 p.m. (Auction). Cost: \$7 per person or \$20 for a family.

The 2009 ELCA Youth Gathering, "JESUS, JUSTICE, & JAZZ", will be in New Orleans, Louisiana July 21-27, 2009. Of the 35,000 projected attendees the following youth and adults will be representing CTS:

Colton Miltenberger, Derek White , Anna Harris , Maddie White, Ashley Hanson, Angela Hess, Dylan Hanson, Mark Springer, Mathew Springer, Eric Bochsler, John Grebe & Melanie Springer

As a member of CTS the Rev. Chris Berry represents us as well. He will be on support staff for the gathering as a hotel pastor.

North Cascades National Park Comes to CTS!

Thinking about a spring day trip? Considering a nearby national park visit? Want to know more? You won't want to miss this kind of "easy chair" orientation to our beautiful North Cascades National Park, hosted by the Whatcom Hearing Loss chapter.

For those of you who have been discovering the wealth of information available when hearing loss support is so badly needed, you'll want to return this month on Saturday, May 16th at 9:30 for two hours of top quality value with the Whatcom Hearing Loss Association Chapter. Charles Beall, Chief of Education and Interpretation for North Cascades National Park will share with us a surprise story about how the park has become a Hearing Friendly Place and just what that means! Our program is hearing friendly, too -- amplification, captioning, and power point use makes it possible to include everyone most effectively, hearing loss or not.

Circle May 16th on your calendar now. Join us at CTS' Community Room at 9:30 to socialize and 10 a.m. for a scenic and informational invitation to visit North Cascades National Park. For more information, contact Charlene MacKenzie at 738-3756 or Bert Lederer at 319-4540.

SEE! THE GOSPEL GOES TO SEA!

You are invited to attend the annual Dinner & Silent Auction at St. Luke's Lutheran Church on May 3, 2009. Hear reports from the chaplains, view videos of the ministry, enjoy good food, and add to the fellowship of other maritime ministry supporters. Tickets are \$15 for adults and \$7.50 children. See Darrell Schoen for tickets at church or call him at 676-5179. Oh, the address of St. Luke's is: 3030 Bellevue Way NE, Bellevue, WA

Service Teams

Sign up in the Narthex or online at www.ctslutheran.org



Jeff & Bev Brook
Rick & Claudia Ackerman

Sally Holloway
Jim & Dianne
Bochsler

Thad Allen
Bob & Barbara Anderson

David & Kathy Brog
Bob & Janice Carmichael
Matt & Kristina Daheim

Mark & Kori Barrett

Arlene & Doug Coppin

Dana & Eric Ferrier

Peter & Bonnie Drewes

John Grebe

John & Shary Ennen
Michael & Analisa Ficklin

Jackie Guthrie

Dan & Mary Glaze

Dave & Kay Hageman
Bruce & Cindy Henninger

Andy Harris

Dave & Debra Jones

Don & Paula Hovde

Karolyn Labes

James & Kathy Kyle

David & Tisch Lynch

Charlene MacKenzie

Erma MacKinnon

Jim & Avis Miley
Noah & Kristin O'Malley
Chuck & Erica Reynolds

Dana & Cindy Petersen
Darrell Schoen & Donna Gustin

Phyllis Segren

Sue & Toby Richner
Peter & Lisa Rosenberg
Jerry & Alice Simmons

Mary Strohmeyer

Rebecca Thomas
Jim & Betsy Stuen Walker

Sarah Wood

Odd & Carol Waade

Tim Wynn

Kurt & Kathi Willis

Faith and Everyday Life

Playing Games

The thunder rolled across the sky. "I'm scared, Mommy!" "It's OK, 'tis only the angels bowling." Bowling? Does God have time for games?



In a world that is crazy; where some have little to eat, others are homeless, wars are constant, and despair is the menu for the news, is there time to play? For the Christian, is play even an option?

Q. What excuse did Adam give to his children as to why he no longer lived in Eden?

A: Your mother ate us out of house and home.

Q: Why didn't they play cards on the Ark?

A: Because Noah was standing on the deck. (Groan. . .)

Maybe the bible stories are too sacred to utilize for humor? Should we be seriously serious whenever we approach the words that convey the gift of life? Or, is it possible that the "words of life" are also meant to tickle our funny bones, engender a deep belly laugh, bring about that joyous contagion that only Play, in all its aspects, can bring?

Can you imagine Jesus with a smile on His face? We can imagine Moses angry, afraid, or triumphant. How about smiling? Do you suppose God chuckled when the people at Babel tried to communicate? Or how do you think God reacted when David danced so exuberantly around the Ark of the Covenant that his short ephod flew up and revealed his nakedness?

I can't help but give thanks that the God I know smiles, laughs, dances, plays games, and deeply encourages us to find the time to Play with each other and with him. Do you suppose that he plays with you, too? Stay alert!

Lutheran Counseling Network

Parish Nurse Corner

Did you know that Whatcom County Parish Nurses are part of a larger group called Northwest Parish Nurse Ministries located in Portland, Oregon? Through this organization we are able to identify with hundreds of professional Parish Nurses who are actively promoting wellness and wholeness in their faith communities. This organization provides, education, advocacy and directories to their members. Yearly Carol, Jeanne and I will attend meaningful conferences, and have the opportunity to hear ministry ideas to enhance our ministry at CTS. Also, monthly we meet at St. Joseph Hospital for local ongoing continuing education and a chance to connect with other Parish Nurses. ♦

In reading the NWPN ministry newsletter this month, I found the Facts and Finds page interesting and want to share it will you.

See Facts and Finds pg 8

Thanks so much to all of our wonderful knitters and crocheters!!! We have given away over 50 prayer shawls since January because of all your wonderful work. The shawls mean so much to those who receive them. At this time our supply of prayer shawls is very low. We always like to have some on hand for those in need. If you have any completed shawls please bring them to the Parish Nurse Office. We would also love to have you join us at our next meeting on Tuesday May 12th.

Thanks again, The Prayer Shawl Ministry

Nurses Corner...

Feeling under pressure? Have your blood pressure checked by our parish nurses. The next blood pressure clinic will be held on Sunday, May 17th after the 9:30 service.



FACTS AND FINDS

Fewer Shakes, Fewer Heart Attacks, Deaths



A study conducted by Kirsten Bibbins-Domingo, PhD, MD, and Gregg C. Fonarow, MD, at the University of California, San Francisco and Los Angeles, concluded that if Americans cut just one gram of salt from their daily diet, there would be 250,000 fewer new cases of heart disease and more than 200,000 fewer deaths over a decade. According to Bibbins-Domingo, Americans currently consume 9 to 12 grams of salt a day, with much of it coming from processed foods. The American Heart Association recommends that healthy adults eat less than 2.3 grams of sodium a day. "We found that very small reductions in salt intake would have very large benefits in the U.S. population," states lead researcher, Dr. Kirsten Bibbins-Domingo.

Neck Fat a Measure of Heart Risk

A too-tight shirt collar might be an indicator of future heart trouble, Framingham Heart Study researchers report. Doctors have long measured fat in the gut to help assess the risk of cardiovascular disease. But fat in the neck is closely associated with the known factors for heart trouble, such as cholesterol levels and diabetes, according to a report using data on 3,320 offspring of the study's original participants. "This study makes good sense to me," states Dr. Kirk Garratt, director of interventional cardiovascular research at Lenox Hill Hospital in New York City, since "people with most of the weight in the upper part of the body have more cardiovascular disease."

Daily Grind Takes on New Meaning



A new survey shows one-third of all Americans are losing sleep over the economy and the recession, and it's not just hitting their pockets. It's hitting their teeth. With plunging stocks and mortgage meltdowns, the economy's not the only thing grinding itself to the bone. "We've definitely seen an increase of patients

coming in with broken teeth, complaining more of headaches and tension, tightness, around the face," said Dr. Mai-Ly Ramirez, DDS. Besides keeping a loved one awake at night, teeth grinding can cause permanent tooth damage: fractures and breaks, an erosion of tooth enamel, a sore or painful jaw, headaches, earaches, insomnia and depression. In addition to mouth guards, dentists recommend a change in lifestyle, including cutting back on caffeine and finding a way to alleviate stress.

Link Between Food Prices, Obesity

A study in the March issue of the *Millbank Quarterly* suggests that food prices can have significant impact on weight outcomes, *United Press International* reports. To examine the link, researchers from the University of Illinois at Chicago performed a meta-analysis of studies published between 1990 and 2008 on the effects of food and restaurant prices on weight outcomes. They found that increasing the prices of unhealthy foods, such as fast food and sugar-laden products and lowering the prices of fruits vegetables and other health foods, is associated with lower body weight and a decreased likelihood of obesity.

Parents Tend Not to See Children as Obese, Overweight

A study published in the March Issue of the *Journal of the American Academy of Nurse Practitioners* suggests that parents may fail to recognize overweight or obesity in their children. Based on a metaanalysis of studies pertaining to childhood overweight and parental perceptions, University of Nevada researchers found that only 1.9 % of parents with children at risk of overweight and 17.1% of parents with overweight children accurately identified their child's weight status. Moreover, parents who were overweight themselves were more likely to misperceive their child's weight risks. The researchers note that if parents are unable to identify their children's risk of overweight or obesity, they cannot intervene to address the situation.

The Sandwich Generation Meets Monthly—Be part of the conversation!

You are invited to come have sandwiches and conversation about caring for aging parents or grieving the death of parents. Come to “Holy Grounds” following the 11am worship service each second Sunday of the month. Come one month or every month as meets your needs or schedule. Those that have attended in the last few months find the mutual support meaningful.

The Sandwich Generation typically meets at 12:30 and will meet next on May 3 (first Sunday, because of Mother’s Day) and again on June 14.

Signing up in the narthex to participate with “The Sandwich Generation” is helpful for preparation. Questions? Contact Deaconess Boyden at deacboyden@earthlink.net or 922-0897. (If Sundays is never a good option for you, but you are interested, please suggest an alternate time).

Congregational gift helps to raise \$125,000 at Interfaith auction

Interfaith Coalition had a tremendously successful and fun auction on March 28. So many individuals and business in our community donated goods, services and experiences, which nearly 350 guests were happy to bid on generously. The coalition of diverse communities of faith raised about \$125,000 to support housing for homeless families, health care for all in need, and social connection for isolated seniors.

Our congregational gift of a tea and gardens Victoria getaway, along with the gifts from other Interfaith member congregations raised more than \$8,000. Over the years, congregational gifts have become some of the most popular items in the annual spring auction.

“As you know, the auction raises one-third of our income for the year. With the increasing need for homeless housing and health care, the support from your congregation helps keep our programs healthy, so we may continue to assist our neighbors in need,” says Lori Polevoi, the coalition’s communications and development director. “Thank you for the creativity and effort your congregation put into the gift you contributed. And above all, thank you for your passion for our mission and your faith that each one is, indeed, a blossom in the Garden of Hope.”

JAPANESE STUDENTS NEED HOST FAMILIES - July 22–August 11!!

We are looking for families now, who would like to have a new and exciting international, educational experience this summer! Host a Japanese girl (ages 15/16) for three weeks in your home. Learn about Japan and the Japanese culture while she learns about living with an American family. Students participate in a program of classes and field trips held during the weekdays in downtown Bellingham. A wonderful experience for families with children of all ages! High School age children of host families are invited to apply to become Conversation Pals during class time. Conversation Pals are monetarily compensated for their time. You can think of this as a reverse mission opportunity. This program has been coming to Bellingham for around 30 years. If this is an opportunity you would like to experience or for more information contact Co-Coordinator, Peggy Carr, 733-7978 or 961-1511, email: carrfish@aol.com or Robin McQuery, 676-6208, email: rmcquery@aim.com Volunteering your home this summer would mean a lot to a visiting student.

Sign up now to be a Friendly Visitor



Individuals who wish to make a difference in the lives of seniors who are isolated with little social contact may attend one of the following upcoming training sessions for Interfaith Coalition's Friendly Visitors program: Tuesday, May 12 from 6 to 9 p.m., Tuesday, June 9 from 1 to 4 p.m., or Thursday, July 23 from 6 to 9 p.m.

Friendly Visitors offers trained volunteers the opportunity to work one-on-one with individuals in need of caring human connection. The program matches compassionate volunteers with older members of the community whose health and well-being may improve with increased social contact. Please call the Friendly Visitors office at **756-5179** to reserve a space at either session.

Economic and Investment Outlook and Update

Looking to renew your investing confidence? This seminar will cover:

- Timely updates on important economic and investment news.
- Timeless strategies for coping with market and economic conditions.
- Knowledgeable outlook from Thrivent Investment Management.

Come learn more about how to put the markets into perspective. You're invited to attend this free informational seminar, hosted by your Thrivent Financial representatives, Holly S. Whittle and Keith O. Atneosen.

Economic and Investment Outlook Seminar Details

Tuesday, May 5, 2009, at 12:00 p.m. or 4:30 pm
Thrivent Financial for Lutherans
805 Dupont St., Ste. 2 Bellingham, WA
Please call 360-738-3588, 866-688-3386 or send an e-mail to holly.whittle@thrivent.com to reserve a place for yourself and a guest.

Join Hands Day weekend—May 1-3

Join Hands Day is a nation-wide day of intergenerational volunteerism, sponsored by fraternal organizations including Thrivent Financial for Lutherans. We need lots of folks to offer themselves in service to prepare the camp for its summer ministry. New this year! Come and stay the weekend! Only \$25!!! If you are attending Saturday only, there is no charge. Friday: 7:00 p.m. Campfire and games Saturday: 9:00 a.m. – 5:00 p.m. Work on projects Sunday: Worship, camp activities. Finish the weekend's activities at noon



- Put a new tar roof on the Lakeview Lodge, install/repair gutters and down spouts.
- Splitting Firewood, Set up O.A.P. Tents and Campsite rehabilitation.
- Install Metal Roof on Girls Bathhouse & Entryway posts and fence.
- Trail Building/Clearing, Gardening & Plant trees to help lower carbon emissions.
- Build Picnic Tables and Challenge Course Elements

And Many More Projects If you are attending Saturday only, there is no charge. Lunch is provided. Events on Saturday will run from 9:00 a.m. to 5:00 p.m. Contributions of materials and money are welcomed! Please let us know that you're coming, so we can plan enough food for lunch. Call Bob Merrill at 360-734-7652 bob.merrill@camplutherwood.org for more information.



Now Is The Time To Speak and To Listen

by The Rev. Chris Boerger, Bishop

After seven years of study, hundreds of public hearings and thousands of letters the proposed social statement on human sexuality has now been distributed to the church.

Human Sexuality: Gift and Trust will be part of the decision making process at the 2009 Churchwide Assembly in August (www.elca.org/assembly). Now is the time for members of this church to comment to those who will be voting on the document, the members of the assembly.

A statement on a topic such as sexuality will not satisfy everyone. Since its release, I have heard from some of you that believe the statement does not go far enough to address the issues, some who believe it has gone too far from scripture and tradition, and some who find the statement a good way to address our diverse church on a controversial topic.

A second document has also been presented. The Human Sexuality Task Force was asked by the 2007 Churchwide Assembly to: "specifically to address and make recommendations to the 2009 Churchwide Assembly on changes to any policies that preclude practicing homosexual persons from the rosters of this church." *Report and Recommendations on Ministry Policies* presents four resolutions that could change our present policy.

The report and recommendations now go to the ELCA Church Council.

Now our work begins as we listen to their work and prayerfully respond to these proposals. We hold a variety of views about these issues. Now is the time for us to speak and to listen.

For the complete article, see the April edition of "The Spirit" at <http://www.lutheransnw.org/publications/spirit/Spirit200904.pdf> or contact the CTS church office.

This year the Synod Assembly is going to be a celebration!

The two-day assembly at the Lynnwood Convention Center is designed in a new format. Voting members on Friday, May 15, will conduct the business of the Assembly. This allows voting members to give the priority that the business of the synod deserves.

Everyone is welcome on Saturday, May 16, because the day is designed as a celebration. Our keynote speaker is Dr. Leonard Sweet, a nationally known author and teacher. (He wrote the book, *The Gospel According To Starbucks*.)

A celebration worship will take place on Saturday, including a synod-wide choir of all ages. The party will continue throughout the day as we offer many "party" rooms where we will share resources and ministries that are available in our own synod.

Come, celebrate and learn. We are *Bringing Our Gifts to God's Party!* For more information visit www.lutheransnw.org.



ELCA.org
Evangelical Lutheran Church in America
Living in God's amazing grace

May 2009

Christ The Servant Lutheran Church

Office Assistant: Laurie Robinson
 Email: office@ctslutheran.org
 Dir. Youth/Family: John Grebe
 Email: youthandfamily@ctslutheran.org

2600 Lakeway Dr., Bellingham, WA 98229 360.733.1277

Interim Pastor: Jim Miley
 Email: PastorJim@ctslutheran.org
 Minister of Visitation: April Boyden
 visit@ctslutheran.org

Family Thursdays
 5:45—6:30—Family Dinner
 6:15—7:45—Confirmation 7/8 grade

Choirs - Thursdays
 5:00 - 5:45 - Joyful Sound
 5:00 - 6:00 - Treble Choir
 6:15 - 7:15 - ASAP
 7:30 - 9:00 - Servant Singers

Sun	Mon	Tue	Wed	Thu	Fri	Sat
3 8:30 & 11:00 —Worship 9:45 am—Sunday School, Conf. (9th), Adult Forum 12:30 pm –Sandwich Generation Lunch	4 7:00 pm—B’ham Chamber Chorale rehearsal	5 10:00 am—Adaptive Yoga 7:00 pm—Kindred Sisters	6 11:30 am—Interim Prayer 4:00 pm Whatcom Girls Choir Rehearsal 7:00 pm—Interim Prayer 7:00—8:30 pm High School Youth Group	7 5:00—9:00 pm Choirs and Family Activities	1 11:00 am—Adaptive Yoga 8 11:00 am—Adaptive Yoga	2 6:00 pm—NYG Dinner & Auction 9 9:00 am—Work Party
10 8:30 & 11:00 —Worship 9:45 am—Sunday School, Conf. (9th), Adult Forum	11 7:00 pm—Worship Meeting 7:00 pm—B’ham Chamber Chorale rehearsal	12 7:30 am—Executive Comm. 10:00 am—Adaptive Yoga 7:00 pm—Prayer Shawl Meeting (off site)	13 11:30 am—Interim Prayer 12:00 Lunch-timers Potluck 7:00 pm—Interim Prayer	14 5:00—9:00 pm Choirs and Family Activities	15 Council Report Deadline 11:00 am—Adaptive Yoga	16 9:30 am—HLA Meeting
17 Semi-Annual Meeting 9:30 am —Worship 11:00—Meeting	18 7:00 pm—Community Minis- tries Meeting 7:00 pm—B’ham Chamber Chorale rehearsal	19 10:00 am—Adaptive Yoga 6:30 pm—Council Mtg.	20 Newsletter Deadline 11:30 am—Interim Prayer 7:00 pm—Interim Prayer 7:00—8:30 pm High School Youth Group	21 5:00—9:00 pm Choirs and Family Activities	22 11:00 am—Adaptive Yoga	23 8:00 am—AARP Drivers Safety Course
24 8:30 & 11:00 —Worship 12:00 pm—High School Youth overnight Compline trip to Seattle	25 Office Closed 6:00 pm—T.R.I.P. meeting 7:00 pm—B’ham Chamber Chorale rehearsal	26 10:00 am—Adaptive Yoga	27 11:30 am—Interim Prayer 7:00 pm—Interim Prayer 7:00—8:30 pm H. S. Youth Group	28 5:00—9:00 pm Choirs and Family Activities	29 11:00 am—Adaptive Yoga “A Day to Remember” activity for 6-9 graders.	30 “A Day to Remember” activity for 6-9 graders.
31 8:30 & 11:00 —Worship 9:45 am—Sunday School, Confirmation (9th), Adult Forum						

REMEMBER IN PRAYER

The World Church & Parish

For Allison Sutton as she continues her mission work in England.

That peace may replace our global cycle of violence and government leaders might work on behalf of all people regardless of ethnicity or religious orientation. And for those in the military, for their safety and safe return home, especially, Steven, Kyle, Kendall Seli, and Neil Wood.

Hope and healing in the lives of survivors of family violence, and a change of heart for the perpetrators of such violence. And for those around the world who are persecuted for their Christian beliefs, especially the tribal people in Vietnam and Laos.

May service teams and coordinators.

Health, Healing, Peace, and Hope

Marilyn Ulleland, Aunt of Karolyn Labes as she battles ovarian cancer.

Jerry Clemons as he recovers from knee surgery.

Janet Boyden as she recovers from a broken leg.

Ernie Segren for peace and strength and he begins chemotherapy for malignant brain tumor.

Family and friends of Virgil and Marge, parents of Willow Rose as they mourn Virgil's passing and Marge's diagnosis of colon cancer.

Nancy, battling ovarian cancer.

Edna Fischer, friend of Ruth Glaser, for recovery from a year-long leg infection.

Sally, friend of Jeanne Brotherton, for God's grace & healing.

Ryland Hamilton, uncle of Bert Lederer, for strength and healing as he is ill.

Helen Chionis, sister-in-law of Mary Hess. She is battling cancer. Please pray for her recovery and healing.

Carmen Bean & Family, Friends of Diann Christey, as Carmen has been diagnosed with cancer.

Ida, mother of Sally Holloway undergoing medical tests.

Phyllis Segren for strength and thanksgiving for her relief from pain which she has received and for her continued relief.

Meegan Moore, sister of Mary Ann Merrill, and Meegan's parents, Richard and Marilyn Moore. Please offer strength and guidance to Meegan and family.

Cal Bekman

Keith Blecker

Kathy Brog

Bill Broughton

Yvonne Donelson

Pat Dwyer

Lois Ferry

John Grebe Sr.

Patty Green

Joni Hall

Barbara Hanlon

Dick Hess

Jim Highhouse

Bert Lederer

Jennifer Loi

R.J. Losleben

Erma MacKinnon

Ken Markem

Charlene MacKenzie

Jim McKenzie

Connie Myers

Laura Nugent

Marjorie Robison

Pam Spangler

Bob Stewart

Rebecca Thomas

Marian Yunghans

Bob

Bobbi

Derek

Harry

Mirna

Nancy

RETURN SERVICE REQUESTED

Non-Profit
Organization
US Postage Paid
Bellingham, WA
PERMIT NO. 46

Christ the Servant Lutheran Church ELCA, 2600 Lakeway Drive, Bellingham, WA 98229
DEADLINE is 12 Noon on 3rd Wednesday of month prior to publication
CHURCH PHONE: 360 733-1277 FAX: 360 734-7246
OFFICE HOURS: 8:00 a.m. - 2:00 p.m. weekdays
e-mail: office@ctslutheran.org
visit our website at <http://www.ctslutheran.org>